



SKU : 181430

The Vector series is the compact all-in-one machining solution, designed and preconfigured for complex manufacturing challenges. The machines are designed using the latest FEM analysis software. The production takes place under strict quality control in order to guarantee perfect execution. Both the tried and tested Meehanite cast and the delta construction of the column ensure additional stability of the machine frame. The consistently high-quality components guarantee smooth operation during multiple shifts.

- Extra-wide Y-shaped Meehanite column for maximum stability
- 30-bar CTS to ensure optimum machining quality
- Designed for multi-shift operation
- Many customization and automation possibilities

TECHNICAL SPECS

WORKING AREA

| | |
|--|-----------------|
| Table dimensions | 800 mm x 550 mm |
| Table load capacity | 600 kg |
| Spindle nose-to-table surface distance | 150 mm - 700 mm |
| Spindle center - column | 520 mm |

TRAVELS

| | |
|---------------|--------|
| Travel X-axis | 650 mm |
| Travel Y-axis | 550 mm |
| Travel Z-axis | 550 mm |
| Guideway | Roller |

HEADSTOCK

| | |
|----------------------|------------------------------|
| Spindle speed | 10000 1/min |
| Spindle mount | SK 40 ISO 7388-1 (DIN 69871) |
| Torque, constant | 57 Nm |
| Spindle bearing | 7012 x 4 |
| Spindle drive method | Riemenantrieb |

RAPID FEED

| | |
|-----------------------|--------------|
| Rapid feed X-/ Y-axis | 36000 mm/min |
| Rapid feed Z-axis | 15000 mm/min |

FEED

| | |
|-----------|--------------|
| Work feed | 10000 mm/min |
|-----------|--------------|

TOOLING

| | |
|------------------------------|----------------|
| Tool changer type | Doppelarm |
| Number of tool stations | 24 positions |
| Tool selection | Memory random |
| Tool size Ø x L (max.) | 80 mm x 300 mm |
| Tool weight max. | 7 kg |
| Tool-change time tool/tool | 1.8 sec |
| Tool-changing time chip/chip | 3.9 sec |

ACCURACIES

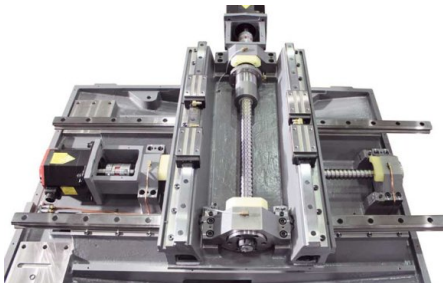
| | |
|------------------------|-------------------------|
| Repeatabilities | ± 0,003 / ± 0.00012" mm |
| Positioning accuracies | ± 0,005/ 0.0002" mm |

DRIVE CAPACITY

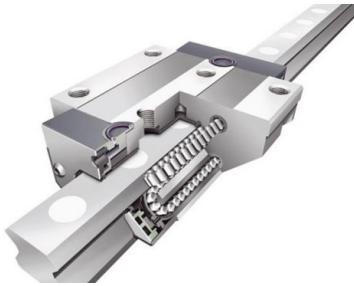
| | |
|-----------------------------|--------|
| Main drive, continuous load | 9 kW |
| Total power consumption | 15 kVA |
| Voltage | 400 V |
| Mains frequency | 50 Hz |

MEASURES AND WEIGHTS

| | |
|--|------------------------|
| Overall dimensions (length x width x height) | 2.42 m x 2.2 m x 2.7 m |
| Weight | 4000 kg |



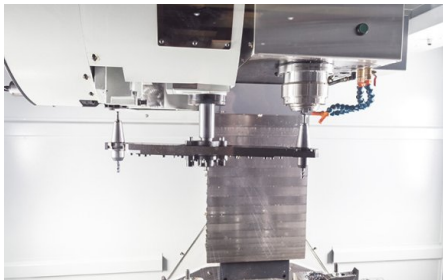
Linear guides and preloaded ball screws



Linear-roller guides for super quiet operation



Siemens Sinumerik 828D with ShopMill



Tool changer with double-arm and BT40 spindle



Wide opening front doors

PRODUCT DETAILS

Highlights

- Rigid machine structure with extra deep center of gravity and small footprint
- Compact all-in-one machining center with a standard configuration for various applications, ideal for the cost-conscious user

Machine Design

- 30 mm preloaded ball screws combined with a digital drive package provide a rigid table guide and high torque
- A major focus during development of this machine was a space-saving design
- Dual-arm tool changer with 24 stations ensures adequate flexibility and capacity for every day production needs
- The Vector Series features linear guides on X, Y and Z to ensure high accuracy made possible by lower friction
- 30-Bar internal cooling for optimum machining quality

Spindle

- Spindle runs on multiple bearings to ensure excellent absorption and dissipation of forces during machining

Tool Changer

- Changing times (1.8 seconds tool-to-tool and 3.9 seconds chip-to-chip) increase spindle up-time and machine output

Control Siemens Sinumerik 828D

- The top specialist for demanding milling operations
- Compact, robust, maintenance-free control panel-based CNC
- Comfortable program and parameter input via QWERTY keyboard
- 100 adjustable zero offsets
- Synchronous actions, and quick output of help functions
- Siemens Sinumerik 828 D Milling
- Maximum machining precision
- Intelligent kinematic transformations for machining of cylindrical parts, and for angled workpiece levels
- SINUMERIK MDynamics with the new Advanced Surface feature: for perfect part surfaces and shortest machining times in mold making applications
- Highlights & CNC performance data and functions Siemens Sinumerik 828 D Milling
- ShopMill: shortest programming time for single parts and small batch productions
- ProgramGUIDE: fastest machining time and maximum flexibility for large series productions
- Unique spectrum of technology cycles - from milling contours with residual material recognition to process measurements
- Animated Elements: unique operation and programming assistance with animated sequences
- Modern data transfer options via USB stick, CF card and network (Ethernet)
- Easy Message: maximum machine availability due to process monitoring per texting (SMS)
- SINUMERIK MDynamics package with Advanced Surface for mold making applications
- Jerk-limited acceleration
- Dynamic feed-forward control
- 4-axis simultaneous interpolation (X, Y, Z and rotary axis)
- Linear, circular and helical interpolation
- Tapping without compensating chuck, plus thread cutting
- Oriented spindle hold
- Toggle between inch and metric units
- FRAME concept for individual coordinate transformations, rotations, scaling and mirroring

CONTROLS & SOFTWARE

Siemens 828D control with Shopmill

SINUMERIK 828 D – The workhorse in the compact class of CNCs

Highlights

- Compact, robust, maintenance-free control panel-based CNC
- Comfortable program and parameter input via QWERTY keyboard
- Maximum machining precision
- Intelligent kinematic transformations for machining of cylindrical parts, and for angled workpiece levels
- SINUMERIK MDynamics with the new Advanced Surface feature: for perfect part surfaces and shortest machining times in mold making applications
- ShopMill: shortest programming time for single parts and small batch productions
- ProgramGUIDE: fastest machining time and maximum flexibility for large series productions
- Unique spectrum of technology cycles - from milling contours with residual material recognition to process measurements
- Animated Elements: unique operation and programming assistance with animated sequences
- Modern data transfer options via USB stick, CF card and network (Ethernet)
- Easy Message: maximum machine availability due to process monitoring per texting (SMS)

CNC hardware

- Control-panel based high-performance CNC Control
- Robust front control panel made of magnesium die-casting
- Integrated full-size QWERTY keyboard
- Maintenance-free design (no buffer battery required)

CNC performance data and functions

- SINUMERIK MDynamics package with Advanced Surface for mold making applications
- Dynamic feed-forward control
- 4-axis simultaneous interpolation (X, Y, Z and rotary axis)
- Linear, circular and helical interpolation
- Tapping without compensating chuck, plus thread cutting
- Oriented spindle holder
- Toggle between inch and metric units
- FRAME concept for individual coordinate transformations, rotations, scaling and mirroring
- 100 adjustable zero offsets
- Synchronous actions and quick help function output

CNC technology cycles

- Technology cycles for programGUIDE and ShopMill work step programming are available
- Large selection of drilling cycles
- Large selection of milling cycles for standard geometry
- Large selection of position patterns for drilling and milling operations
- High-speed settings for mold making applications
- Geometry calculator for free contour input
- Machining cycle for contour pockets / contour spigots with isolated contours

Graphic features

- Animated Elements: input help for machining parameters with animated sequences
- Graphical online help system, similar to PC system
- Graphical CNC simulation with level display

CNC tool management

- Display of tool and magazine data on one screen
- Tool management with plain-text tool names
- Loading/unloading feature for easy magazine assignment
- Tool management with tool life monitoring
- 10.4" TFT color monitor
- Jerk-limited acceleration

STANDARD EQUIPMENT

Preparation for Renishaw TS 27 R
Siemens 828D control with Shopmill
Coolant through spindle 30 bar with double filter

24-station tool changer with dual-arm
 Main spindle motor 9 kW
 ST 40 mount
 Spindle oil cooler
 Chain-type conveyor with chip container
 Electronic hand-wheel
 Oil skimmer
 Automatic central lubrication
 Coolant system flush gun
 Chip wash system
 Heat Exchanger for electric control cabinet
 Telescoping axis cover
 USB port
 CF card reader
 Totally enclosed work space
 Work lamp
 3-color signal lamp
 Coolant system
 Adjustable machine feet
 Operating tools
 Operator instructions

OPTIONAL EQUIPMENT

- Top cover for X.Mill/Vector 650-1000, SKU : 252819
- Renishaw OMP 40 Workpiece Measuring, SKU : 252820
- Arm Type BT40 upg. from 24 to 30 tools, SKU : 252967
- Connection for 4th axis (wiring only and axis chart), SKU : 253019
- Siemens Function: P25: 3D Simulation, SKU : 253378
- Siemens Function: P13: Residual Material Detection, SKU : 253379
- Siemens Function: P22: Simultaneous Recording, SKU : 253380
- Renishaw Tool Setter TS27R, SKU : 253386
- Measuring Cycles, SKU : 253438
- Renishaw OTS wireless tool setter (OTS), SKU : 253598
- Ø170mm 4th axis (4th axis, servo motor, driver, air brakes)(Si), SKU : 253605
- Ø210mm 4th axis (4th axis, servo motor, driver, air brakes)(Si), SKU : 253606
- Ø250mm 4th axis (4th axis, servo motor, driver, air brakes)(Si), SKU : 253607
- preparation for Renishaw OMP40, SKU : 253613
- manual tailstock ST-170T for rotary table for X.mill, SKU : 253618
- manual tailstock ST-255T for rotary table for X.mill, SKU : 253620
- manual 6" chuck for rotary table for X.mill, SKU : 253622
- manual 9" chuck for rotary table for X.mill, SKU : 253624
- Upgrade from 10.4" to 15" touch screen (for PPU260 or higher), SKU : 253674
- Renishaw OMP 60 workpiece measuring system (BT40), SKU : 253681
- 200 mm diam. 4th & 5th axis for Vector 650/850/1000 (Si), SKU : 253682
- Upgrade from 828D PPU260 to 840DSL IPC447E 10.4" for Vector, SKU : 253835
- Upgrade Spindle Taper from SK40 to BBT 40, SKU : 253951
- Upgrade Spindle Taper from SK40 to HSK63, SKU : 253953
- 12,000 rpm, direct drive CTS for Vector 650-1200(Si), SKU : 253956
- Z axis travel upgrade from 550 to 800 mm for X.mill, SKU : 253625
- Spindle speed upgrade to 12000 rpm, belt-type, SKU : 253781



KNUTH on YouTube Information to the point

On our YouTube channel you can find videos for nearly all machines from our program. We show the machines from current deliveries and you get an impression of the handling, the processing quality and the machining performance.

**Are you interested in a machine for which you cannot find a current video?
Please feel free to contact us!**