

FLEXOR 1400 6P

The Leading Brand in
Flexographic Printing Presses

**Experience the difference can make
in your printing operations today**



FLEXOR, is the perfect solution for all your flexographic printing needs. With a focus on safety, quality, stability, and high speed, FLEXOR ensures a seamless printing experience with exceptional results.

Our printing presses are constructed using rigid and robust materials, guaranteeing durability and minimizing the chances of industrial downtime. The design also reduces vibrations and noise levels, making it a quiet and efficient option.

One of the outstanding features of FLEXOR is its power-saving capabilities, contributing to a more sustainable and cost-effective printing process. Additionally, our machines deliver the finest quality output, ensuring your prints are of the highest standard.

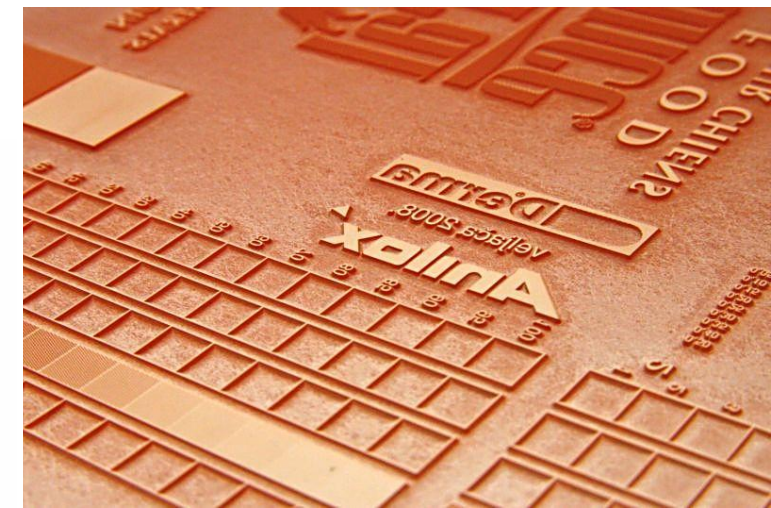
Operating and adjusting the FLEXOR printing press is incredibly simple and quick, allowing for easy size changes in just a few minutes. This user-friendly interface makes it easy for operators to operate the machine without any hassle.

Our anilox roller is made from ceramics, ensuring longevity and delivering consistent, precise prints. The FLEXOR machine is compatible with various materials, including kraft paper, shiny paper, coated paper board, and recyclable materials, without compromising print quality or roll material efficiency.

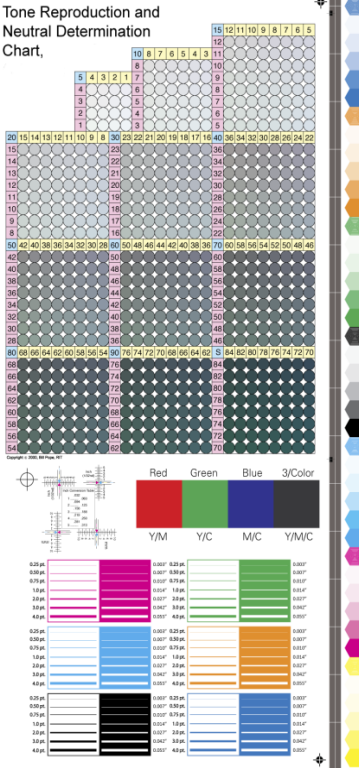
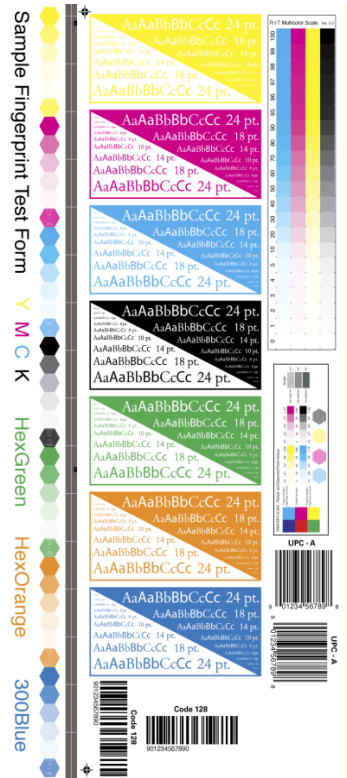


flexo•expert

FLEXOR printing press is designed to cater to a wide range of printing requirements, six colors. Its integrated system enables printing with intrinsic accuracy, and the PLC control enhances overall efficiency



FLEXOR printing press is ideal for printing a variety of eco-friendly paper cups, paper bowls, food boxes and paper bags. catering to a wide range of customer needs.



Machine model	FLEXOR 1600 -6 P. Six colors (double side). 6+0,5+1,4+2,3+3
Constitution of Printing	Ceramic anilox roller 、 Rubber roller 、 Chrome plated roller、 Printing cylinder 、 Chamber side doctor blade
Printing cylinder	280-1600mm(one set 400mm for free)
Printing cylinder double side	Bearing type
Material of Plate	Resin or Rubber
Principle of Work	belt driving,
all gears out of machine base	
Adjusting of Register	PLC control (up and down,left and right)
Overprint Precision(mm)	+0.2mm
Plated-glued roller adjusting	Hydraulic type,auto horizontal type
Ink pump	6pcs
Camera	1set
Type of Unwind	auto tension with magnetic powder 10kgs
Unwinder EPC	U type(ultrasonic)
Axis core diameter ϕ	76mm
Type of Heating and drying	blowing first then heating
Ink-Transfer Motor	6pcs
Horizontal and vertical register motor	6pcs
Max Width of Material	1400mm
Max. Width of Printing	1350mm
Material	Non-woven fabric : 15-120g Paper15~350g/m² PVC:15~120μm OPP:10~100μm BOPP:10~100μm PE:15~150μm NY:15~120μm PET:15~100μm CPP 15~100μm、
Max. Length of Printing	280-1600mm
Machinery mechanical speed	150m/min
Max. Speed of Material Printing	10-100m/min(with single doctor blade) 120m/min(with chamber doctor blade)
Thickness of Plate	1.14mm/ 1.7mm/2.28mm/2.54mm/2.94mm resin plate (3.94mm rubber plate)
Power of Heating	35kw
Main motor	5.5kw
Power	Voltage:380V,3PH,50HZ
Machine dimension (L×W×H)	6.2m×2.6m×3.7m
Machine weight	7000Kgs

The FLEXOR machine is a state-of-the-art flexographic printing press that offers various advanced features and enhancements to ensure high-quality and efficient printing.

One of the key highlights of the machine is the magnetic powder controller, which effectively controls the tension of the paper coil feeding. This feature ensures stable and uniform feeding of the paper, resulting in improved print quality.

The rectifying system of the machine utilizes a stepping motor, which offers higher accuracy in adjusting the printing position. This ensures the precise positioning of the artwork and enhances the overall print quality.

The feeding system of the machine is controlled by a hydraulic system, allowing for easy and fast adjustments in the up, down, left, and right directions. This feature provides convenience and efficiency in operating the machine.

The magnetic powder controller, deviation correction controller, and the machine's starting button are all conveniently located on the operation panel at the feeding area. This design makes it quick and easy to adjust the machine according to the specific requirements.

The rectification system of the machine is equipped with an ultrasonic sensor, which offers more accurate sensing compared to traditional photoelectric sensors. This ensures precise printing registration and enhances the overall print quality.

The hydraulic system controls the paper roll change for feeding and receiving, providing convenience, speed, and power in the process.

The FLEXOR machine also features an automatic lifting and lowering printing plate cylinder. When the machine stops, it automatically lifts the plate, and when the machine starts, it automatically lowers the printing plate and ink delivery. This feature simplifies the setup process and improves efficiency.

To ensure high-quality printing, the machine is equipped with a ceramic anilox chambered doctor blade. This feature guarantees consistent ink transfer and results in a superior printing effect.

The closed circulating ink box of the machine maintains cleanliness during operation, preventing flying ink and facilitating easier colour changes and ink box cleaning.

The upper and lower blades of the machine create a closed ink transport mode, preventing flying ink and ensuring even distribution of ink to the anilox, thus guaranteeing exceptional printing quality.

The ink pump of the machine automatically and evenly absorbs ink, contributing to a higher printing quality.

With an automatic 360° circulation longitudinal register, the left and right registers can be adjusted automatically through buttons. This precise register control ensures higher-quality printing with a precision of $\pm 0.15\text{mm}$.

Each printing section of the machine comes with independent drying parts, ensuring proper drying and maintaining excellent printing quality.

The back-to-back winding feature of the machine ensures that paper rolls are neatly arranged, facilitating subsequent production processes such as paper bag manufacturing.

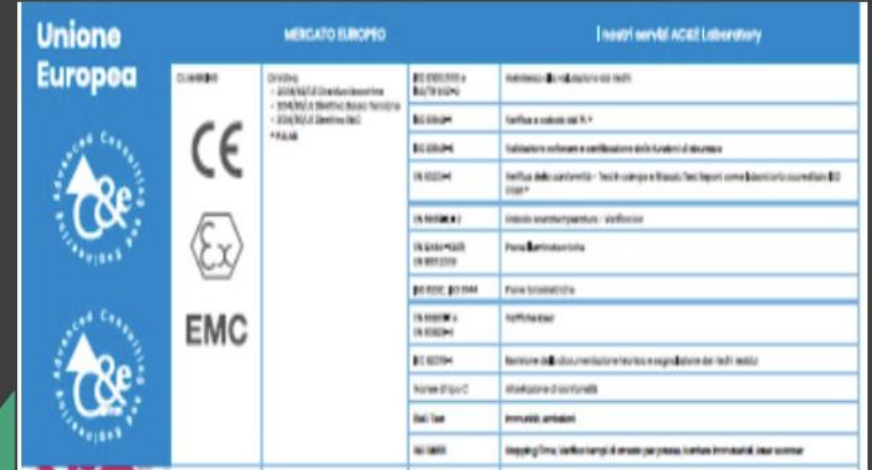
The combination of heating and air drying systems in the machine ensures quick drying of ink at high speeds, minimizing production delays and maintaining printing quality.

The operation of the FLEXOR machine is carried out through a touch screen panel, utilizing Omron brand technology from Japan. This user-friendly interface provides ease of use and precise control.

With a shaftless feeding device, refuelling the machine becomes more convenient, saving time and effort.

The receiving button and the start/stop functions of the machine are conveniently located in the receiving area, allowing for efficient and easy operation.

FLEXOR machine offers a wide range of advanced features and enhancements to deliver exceptional printing quality, efficiency, and convenience in the flexographic printing process.



CERTIFICATE

CERTIFICATE OF CONFORMITY
2006/42/EC 2014/30/EU
No. VHT2307079E

Applicant : GUTENBERG GRAFISCHE MACHINES BV
Address : SIRIUSDREEF 17-27.2132 WT HOOFDDORP – THE NETHERLANDS

Manufacturer : GUTENBERG GRAFISCHE MACHINES BV
Address : SIRIUSDREEF 17-27.2132 WT HOOFDDORP – THE NETHERLANDS

Product : MASTER BAG
Model(s) : AP-250, AP-350, M-250, M-300, M-350, SB-190, SB-330, SB-450, SB-450B, SB-550, FA-190, FA-330, FA-450, FA-450B, FA-550, FH-190, FH-330, FH-450, FH-450B, FH-550, FC-190, FC-330, FC-450, FC-450B, FC-550

Trade Mark : **GUTENBERG**

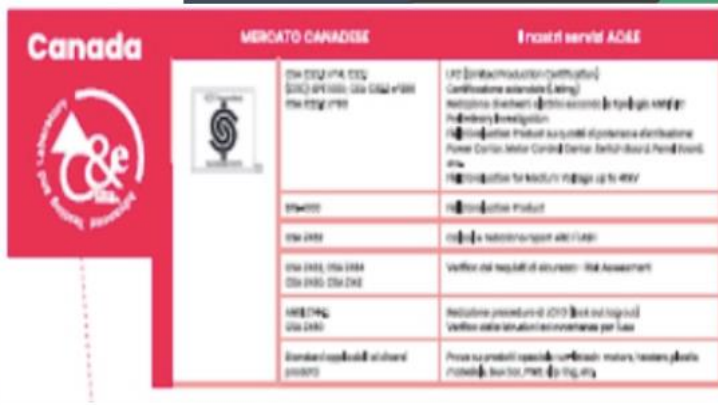
Test Report No. : VHT2307072EE-1-1
Test Standards : EN 95254-1:2018, EN ISO 12100:2010, EN 61000-6-1:2007, EN 61000-6-3:2007 + A1:2011 + AC:2012

Technical file of the company mentioned above has been observed.
2006/42/EC Machinery Directive and 2014/30/EU Electromagnetic Compatibility Directive have been taken as references for these processes.
The test results apply only to the particular sample tested and to the specific tests carried out. Specifically to the sample investigated in our test reference number only.
The CE markings as shown below can be affixed on the product after preparation of necessary technical documentation.
Other relevant Directives have to be observed.

Certificate issued: Jul 20, 2023
Authorized Signature:
Name:

CE

This Test Report is issued by the Company subject to its Conditions of Issuance of Test Report printed overleaf or attached. The results shown in this Test Report refer only to the sample(s) tested unless otherwise stated and such sample(s) are retained for 30 days only. This Test Report shall not be reproduced, copied or used, without written approval of the Company.
Web: <http://www.eurohy.com> E-mail: info@eurohy.com Telephone number: +86 755 8098-0917
Add: Floor 3, Building A-03, Zone A, Shuangshuang Street, Chougang Street, Yiwu, China



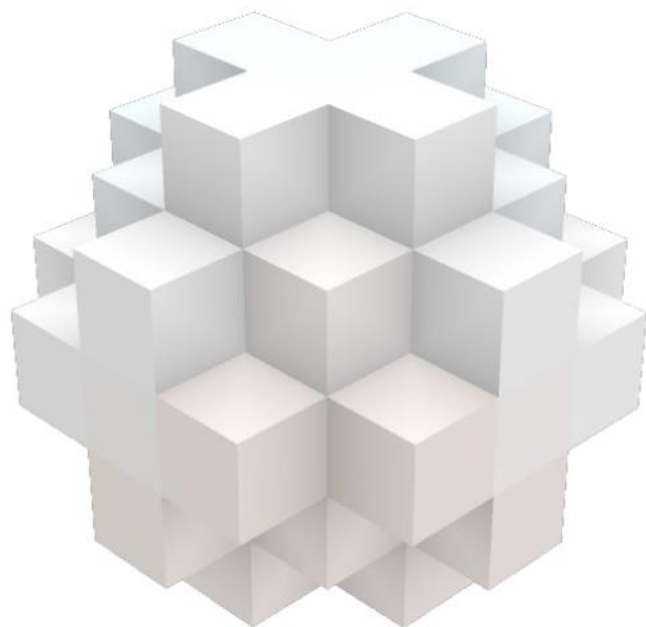
With a team of seasoned professionals well-versed in global safety regulations and standards, Master Bag provides expertise that transcends borders. We understand the unique requirements of different regions and tailor our compliance solutions accordingly.

From Canada to the USA, Brazil to Europe, Master Bag guarantees that your machinery complies with the specific regulations of each region. Our comprehensive approach covers everything from electrical safety standards to environmental regulations, ensuring full compliance across the board.

- Our compliance services are backed by certifications that are recognized and respected worldwide. Whether it's CSA certification for Canada, UL listing for the USA, or INMETRO certification for Brazil, Master Bag ensures that your machinery meets the necessary standards for operation in each region.

GUTENBERG

GRAFISCHE MACHINES B.V.



Phone: 00 31 023 5689139

Mobile: +31 6 42388004

WhatsApp: 0031 6300 744 07

SIRIUSDREEF 17-27 2132 WT

HOOFFDORP – THE NETHERLANDS

email: info@gutenbergmachines.com

WWW.GUTENBERGMACHINES.COM

ENVIRONMENT



00.00.00
00 00 00

SAVE
OUR
EARTH

