

Baler Europress, type EP5 150 V5, 150 t pressing force, yoc 2015, only 19,173 operating hours, drive power 2 x 55 kW, with HARDOX floor an sidewalls



The machine is still completely assembled and available at short notice. Dismantling and loading is the responsibility of the buyer. The documentation (operating instructions, electrical circuit diagram, hydraulic circuit diagram, CE confirmation declaration) is available in German. An inspection is possible by arrangement. We do not assume any liability for the technical data and possible errors.

Technical data baler:

Manufacturer Europress Umwelttechnik GmbH, Germany
Type EP5 150 V5
Year of construction 2015
Operating hours 19,173 hours
Number of pressed bales 282,961 bales
Number of press strokes from the press ram 1,895,112 press strokes
Pressing force of main press 150 t
Specific pressing force 181.8 N/cm²
Dimensions of feed chute 1,000 x 2,000 mm (w x l)
Bale dimensions 750 x 1,100 mm (h x w), length variable
Drive power 2 x 55 kW + 15 kW + 2 x 0.75 kW
Rated current 230 A
Cable cross-section supply 120 mm²
Tying 5-fold vertical, fully automatic
Hydraulic oil tank capacity 4,300 l
PLC control Siemens S7 / ET200S
Transport weight press 35,800 kg

Special equipment:

Base plates and side walls made of HARDOX steel
Free tamper in front of the counter blade, with cleaning cycle

Scope of delivery:

1 piece baler

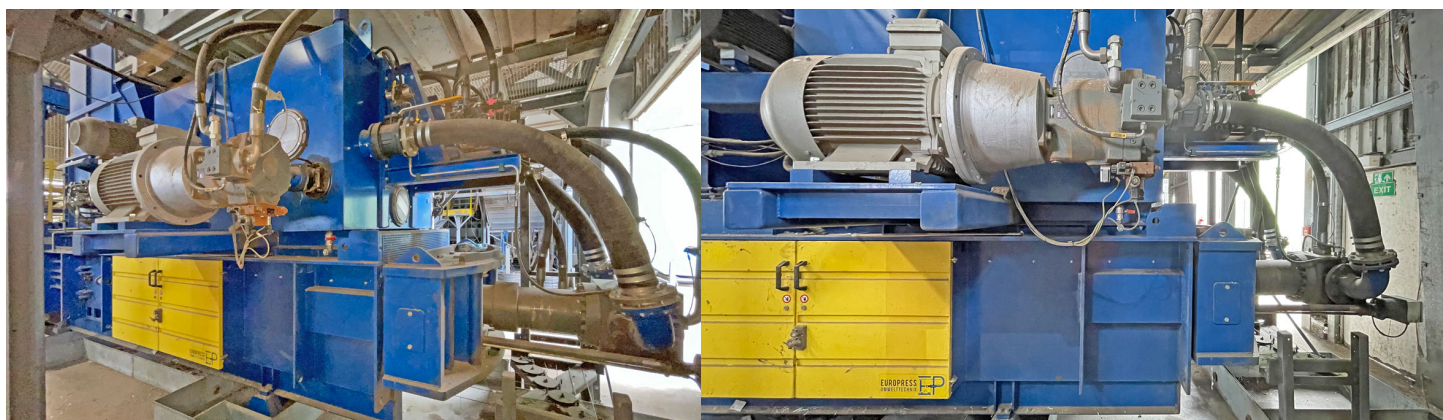
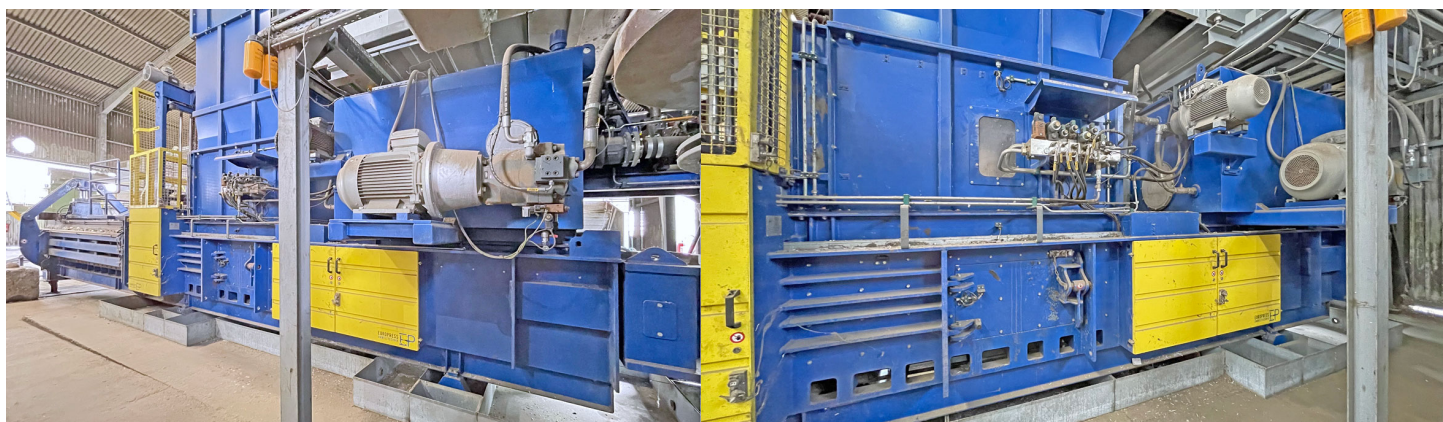
Baler Europress, type EP5 150 V5, 150 t pressing force, yoc 2015, only 19,173 operating hours, drive power 2 x 55 kW, with HARDOX floor and sidewalls

1 piece control cabinet
1 set of oil collecting pans under the baler
1 piece maintenance platform on the baling channel
1 piece Feed hopper
1 piece Drop chute
10 pieces wire reel stands
2 pieces wire drawing stations with deflection rollers
1 set of machine documentation (operating instructions, electrical circuit diagram, hydraulic circuit diagram, CE confirmation)

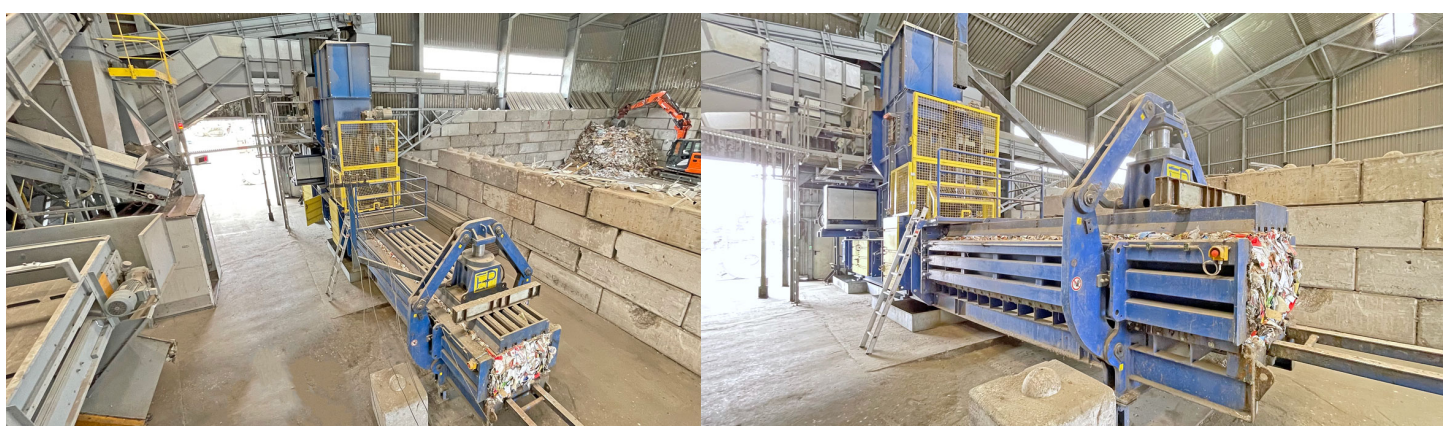
Remarks:

The machine is still completely assembled and available at short notice. Dismantling and loading is the responsibility of the buyer. The documentation (operating instructions, electrical circuit diagram, hydraulic circuit diagram, CE confirmation declaration) is available in German. An inspection is possible by arrangement. We do not assume any liability for the technical data and possible errors.

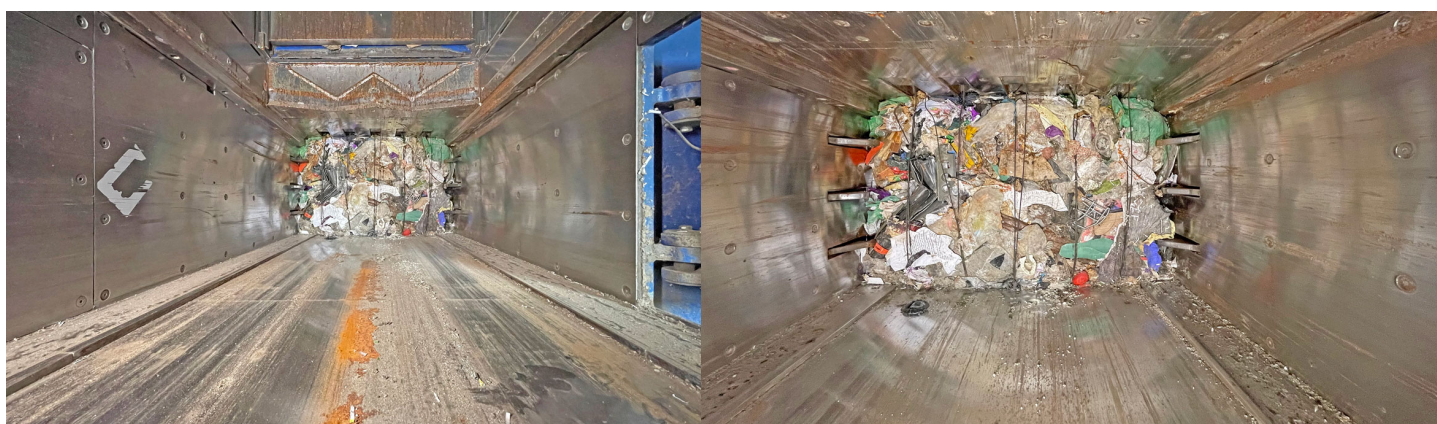
Baler Europress, type EP5 150 V5, 150 t pressing force, yoc 2015, only 19,173 operating hours, drive power 2 x 55 kW, with HARDOX floor an sidewalls



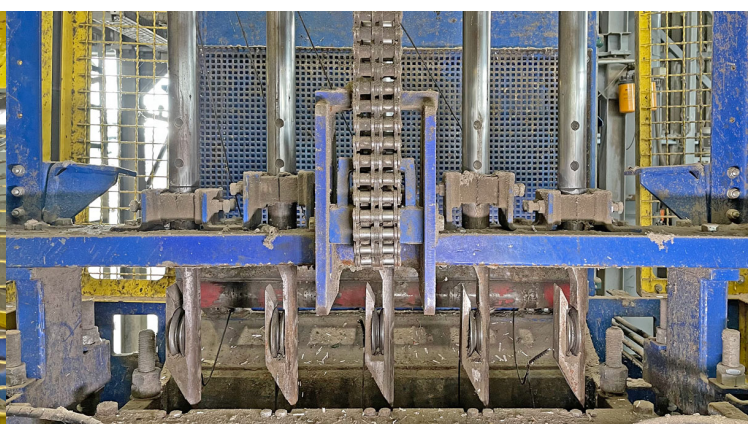
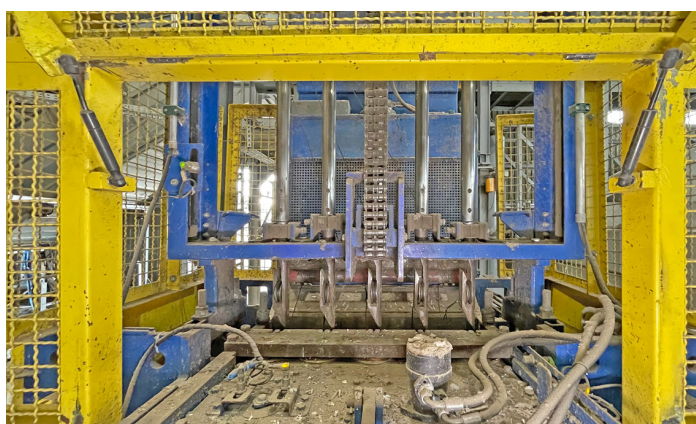
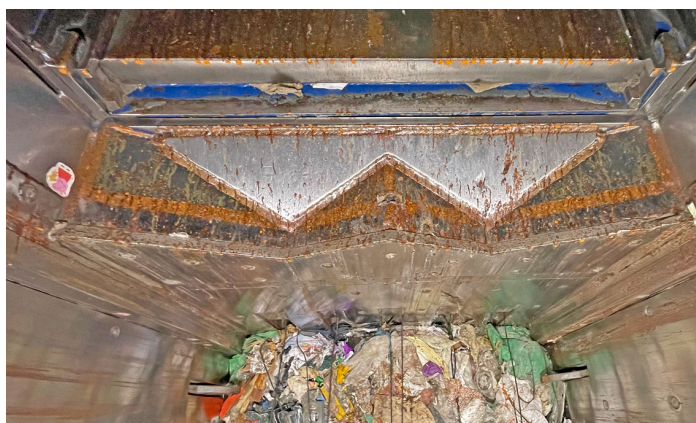
Baler Europress, type EP5 150 V5, 150 t pressing force, yoc 2015, only 19,173 operating hours, drive power 2 x 55 kW, with HARDOX floor an sidewalls



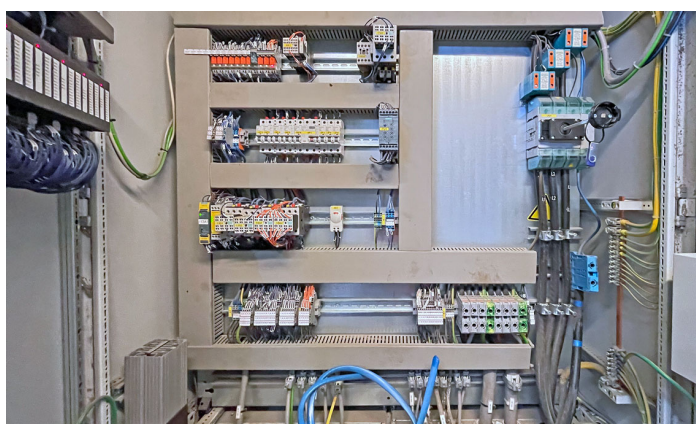
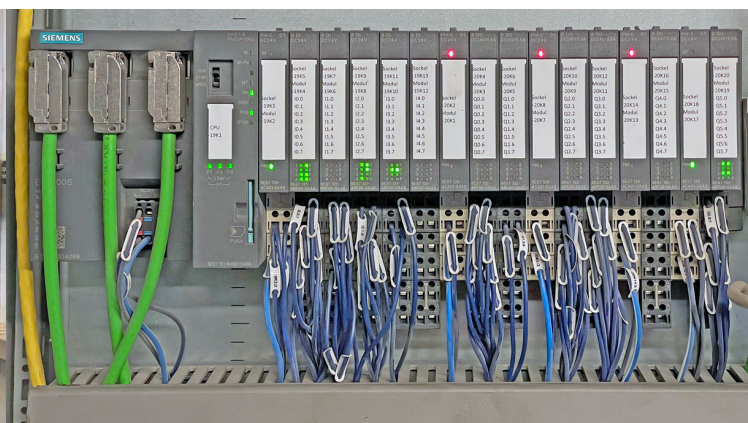
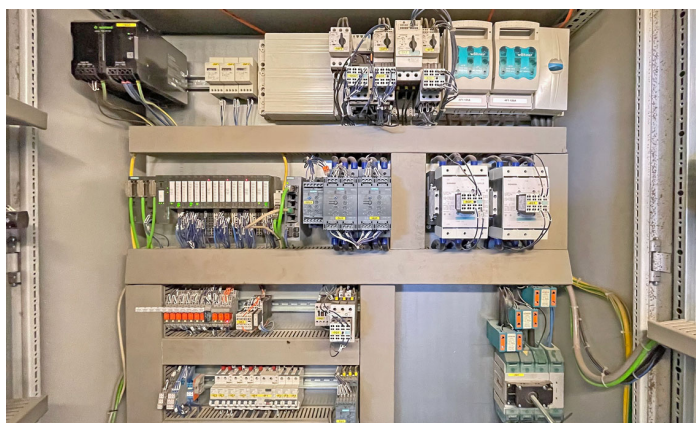
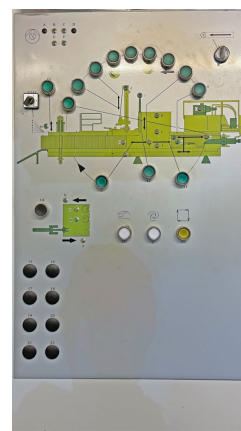
Baler Europress, type EP5 150 V5, 150 t pressing force, yoc 2015, only 19,173 operating hours, drive power 2 x 55 kW, with HARDOX floor an sidewalls



Baler Europress, type EP5 150 V5, 150 t pressing force, yoc 2015, only 19,173 operating hours, drive power 2 x 55 kW, with HARDOX floor an sidewalls



Baler Europress, type EP5 150 V5, 150 t pressing force, yoc 2015, only 19,173 operating hours, drive power 2 x 55 kW, with HARDOX floor an sidewalls



Baler Europress, type EP5 150 V5, 150 t pressing force, yoc 2015, only 19,173 operating hours, drive power 2 x 55 kW, with HARDOX floor an sidewalls

