

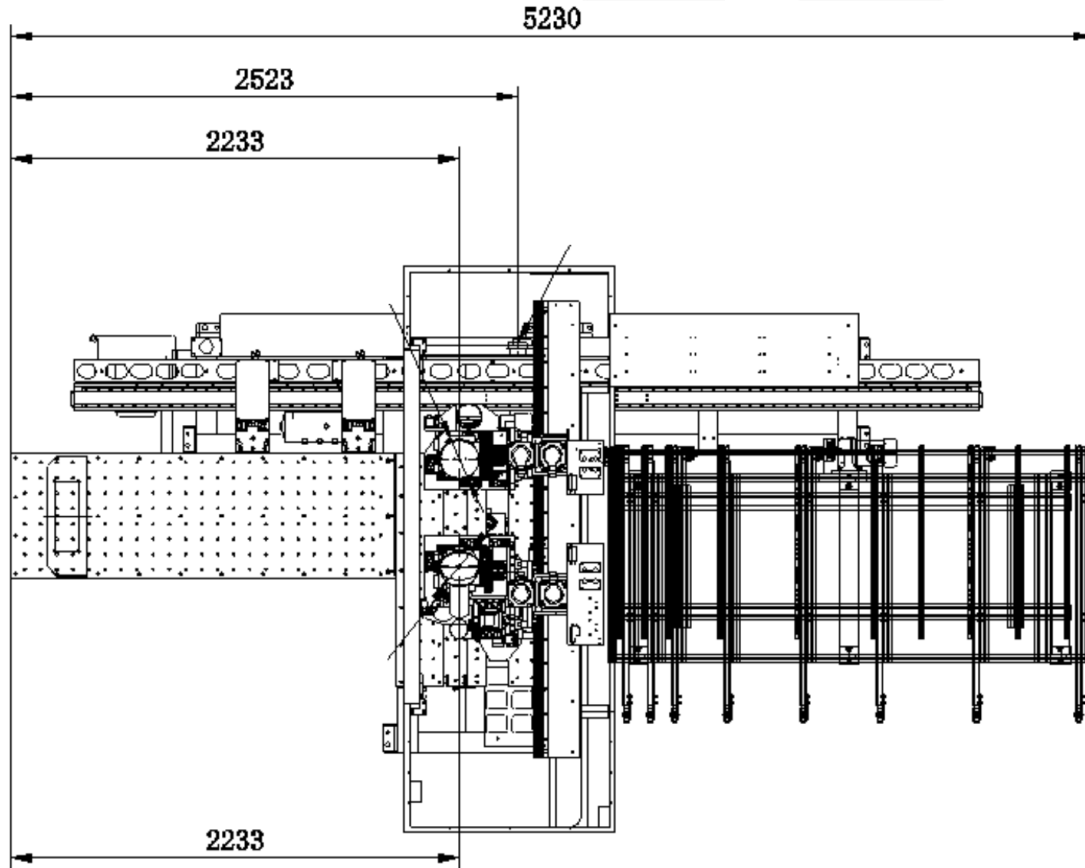
2019 Thru Feed Boring Machine

TF x00 Range



Machining Centre for High flexibility

Top View



Field of Use

Thru Feed Boring machine dedicated to:

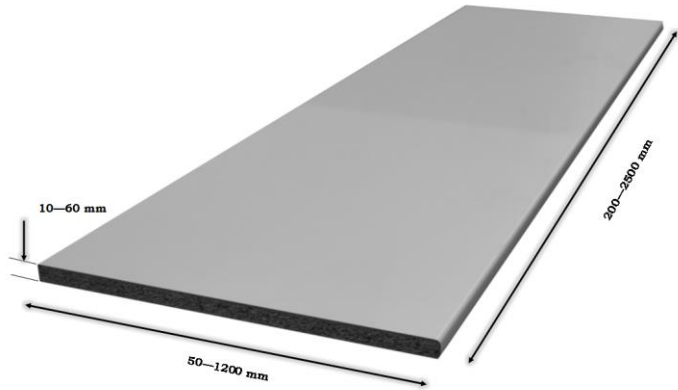
- Kitchen manufacturers
- Office Elements manufacturers
- Interior designers

Field of Use

Type of Company:

- Small – Medium craftsmen
- Kitchens Producer
- Office Elements Producer
- Production of furnishing elements
- Medium and Large companies (*)
 - ✓ Off-line drilling-routing machine for Large companies
 - ✓ Special Parts not workable in line
 - ✓ Integrated machine in a production cell (TF 600SA)

Technical Datas



Workable Piece

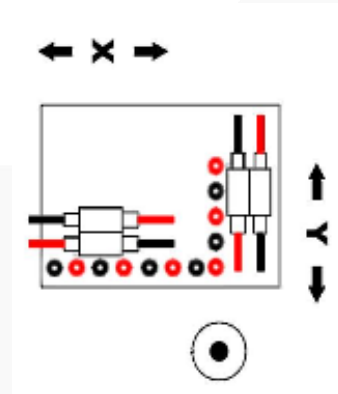


Max move speed of clamp : 130 m/min

Max speed Y axis : 75 m/min

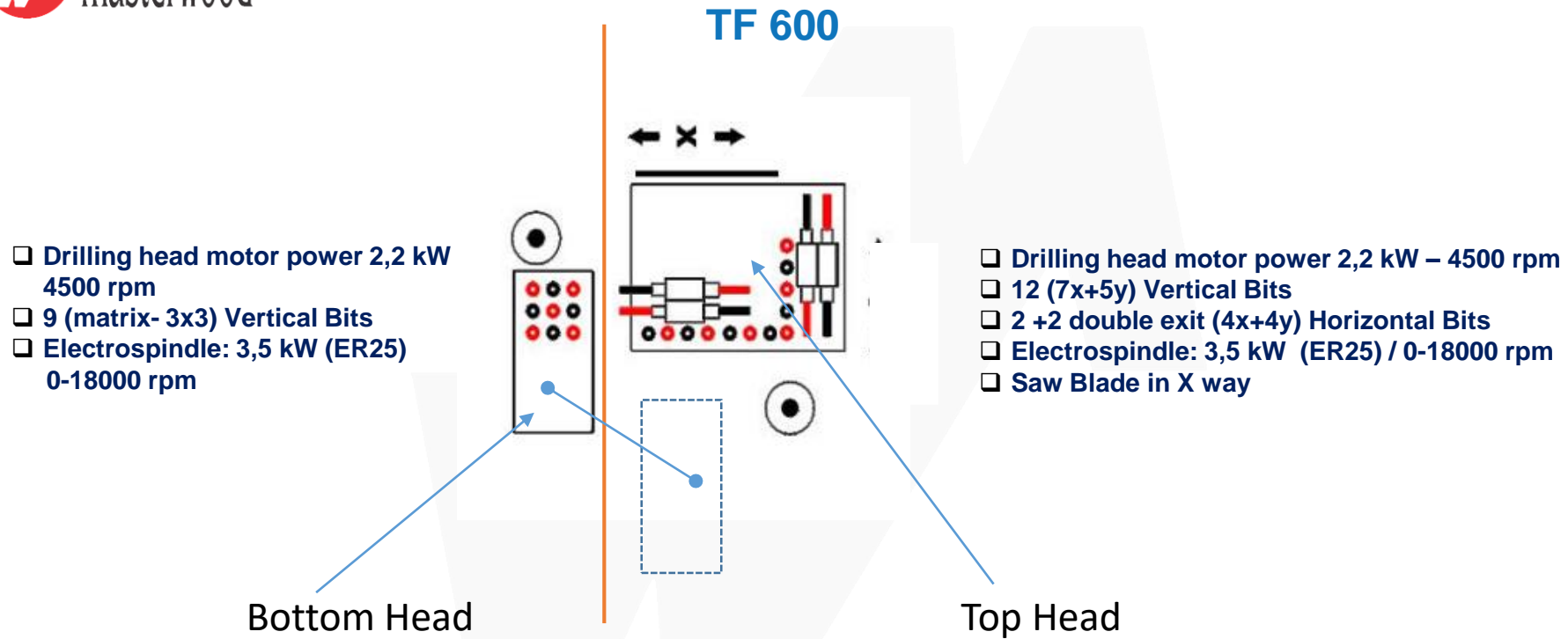
Max speed Z axis : 30 m/min

TF 500



- ❑ Drilling head motor power 2,2 kW – 4500 rpm
- ❑ 12 (7x+5y) Vertical Bits
- ❑ 2 +2 double exit (4x+4y) Horizontal Bits
- ❑ Electrospindle: 3,5 kW (ER25) / 0-18000 rpm
- ❑ Saw Blade in X way

Thru Boring Machine with Top Head



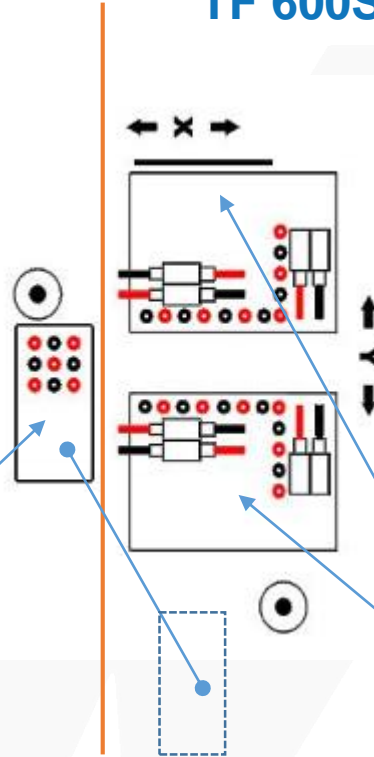
Thru Boring Machine with Top and Bottom Head

Only Internal Use

TF 600S

- ❑ Drilling head motor power 2,2 kW
4500 rpm
- ❑ 9 (matrix- 3x3) Vertical Bits
- ❑ Electrospindle: 3,5 kW (ER25)
0-18000 rpm

Bottom Head

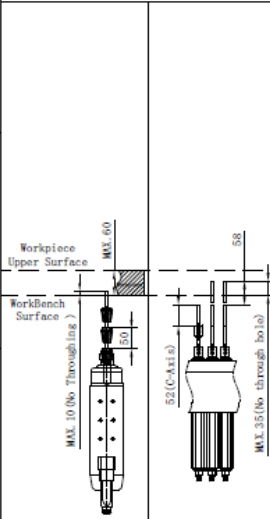
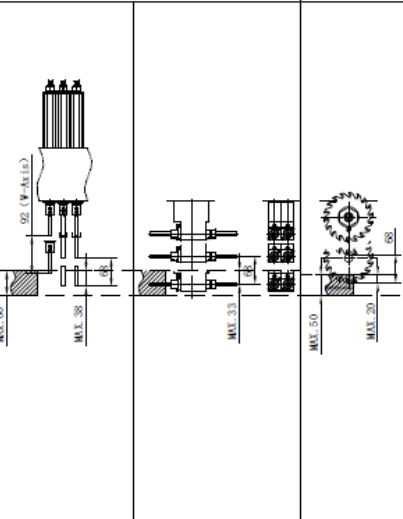
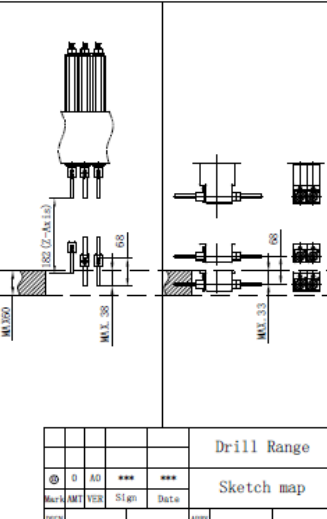
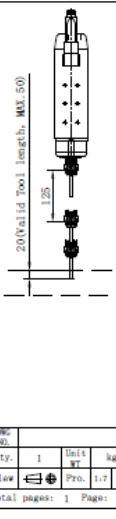


- ❑ Drilling head motor power 2,2 kW – 4500 rpm
- ❑ 12 (7x+5y) Vertical Bits
- ❑ 2 double exit + 2 single exit (4x+2y) Horizontal Bits
- ❑ Saw Blade in X way

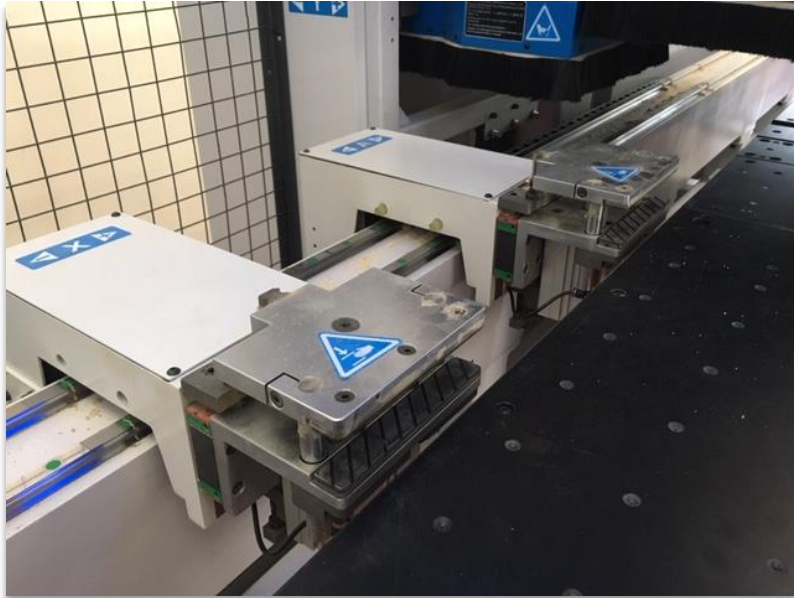
- ❑ Drilling head motor power 2,2 kW – 4500 rpm
- ❑ 12 (7x+5y) Vertical Bits
- ❑ 2 double exit + 2 single exit (4x+2y) Horizontal Bits
- ❑ Electrospindle: 3,5 kW (ER25) / 0-18000 rpm

Double Top Head

TF x00

Bottom Drill		Left Drill			Right Drill																									
Electric Spindle	Vertical Drills	Vertical Drills	Horizontal Drills	Saw	Vertical Drills	Horizontal Drills	Electric Spindle																							
Tool Holder 1/2in. Length 70~90mm Tool Diameter 1~16mm	9 Spindles Drill holder: $\phi 10$ Drill Length: 70mm	12 Spindles Drill holder: $\phi 10$ Drill Length: 70mm	6 Spindles Drill holder: $\phi 10$ Drill Length: 70mm	Saw Blade $\phi 120$ Tool Holder $\phi 20$	12 Spindles Drill holder: $\phi 10$ Drill Length: 70mm	6 Spindles Drill holder: $\phi 10$ Drill Length: 70mm	Tool Holder 1/2in. Length 70~90mm Tool Diameter 1~16mm																							
Workpiece Thickness 10~60mm				Workpiece Thickness 10~50mm	Workpiece Thickness 10~60mm																									
																														
<table border="1"> <tr><td>Drawn by</td><td>GBT 1394-s</td></tr> <tr><td>Checked</td><td>GBT 1394-s</td></tr> </table>		Drawn by	GBT 1394-s	Checked	GBT 1394-s				<table border="1"> <tr><td colspan="2">Drill Range</td><td>Unit</td></tr> <tr><td>Qty.</td><td>1</td><td>Unit</td></tr> <tr><td>Weight</td><td>kg</td><td></td></tr> </table>		Drill Range		Unit	Qty.	1	Unit	Weight	kg		<table border="1"> <tr><td colspan="2">Sketch map</td><td>Total pages: 1 Page: 1</td></tr> <tr><td>View</td><td>1/7 A3</td><td></td></tr> <tr><td>Scale</td><td>1:1</td><td></td></tr> </table>		Sketch map		Total pages: 1 Page: 1	View	1/7 A3		Scale	1:1	
Drawn by	GBT 1394-s																													
Checked	GBT 1394-s																													
Drill Range		Unit																												
Qty.	1	Unit																												
Weight	kg																													
Sketch map		Total pages: 1 Page: 1																												
View	1/7 A3																													
Scale	1:1																													

Clamps for Pieces Movimentation



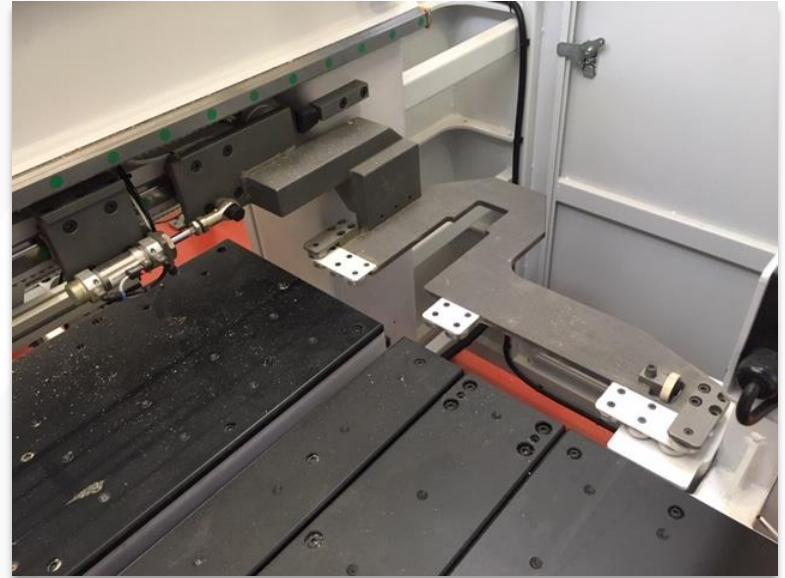
Double Clamps:
Separated Movement with double **Horizontal**
Linear Guides

Max speed 130 mt/min

Min-Max pieces thickness: 10 – 60 mm

Check the right thickness dimension of the piece

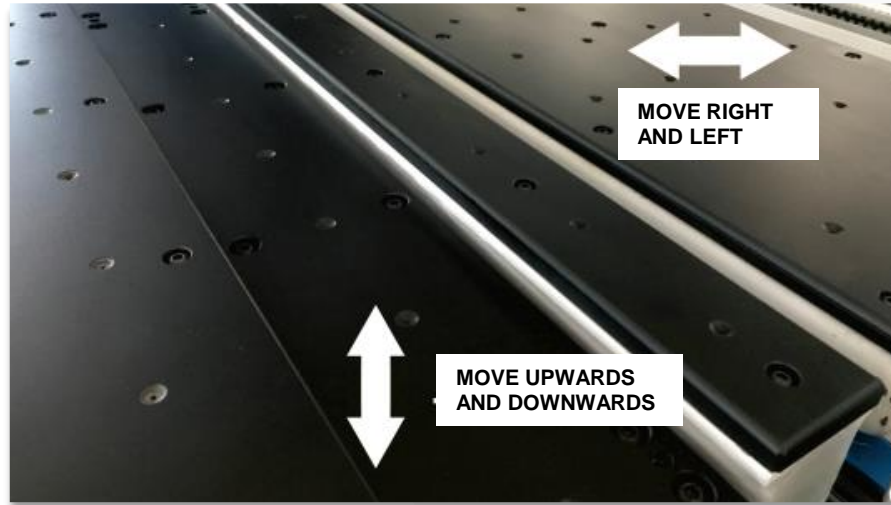
Clamps for Pieces Movimentation



Y axis – Side-Align Mechanism

It ensures the perfect alignment and the machining with high accuracy

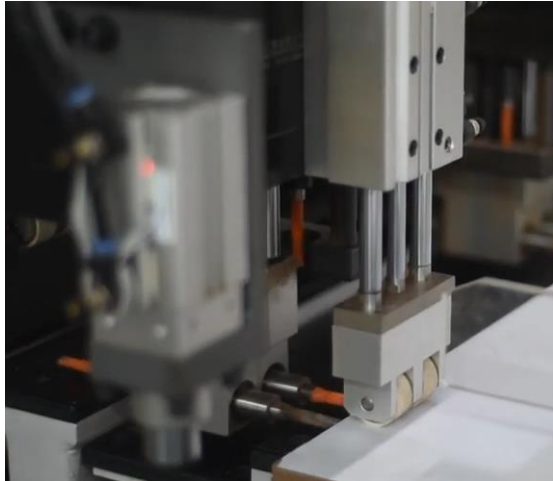
Accuracy Reliability Performance



Air floating working table (Patent)

Smart table for continuous workpiece support with two separated movements. The working table lifts upwards and downwards, and move right and left, allowing all the machining and the widest possible sustaining and avoid from panel scratching when horizontal boring head operates

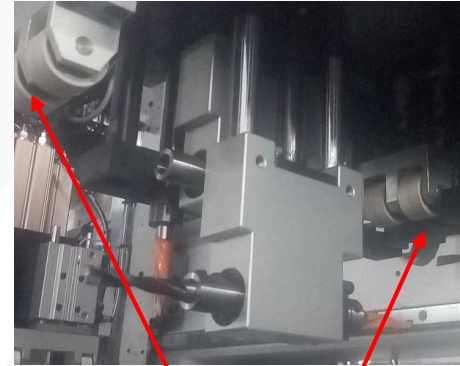
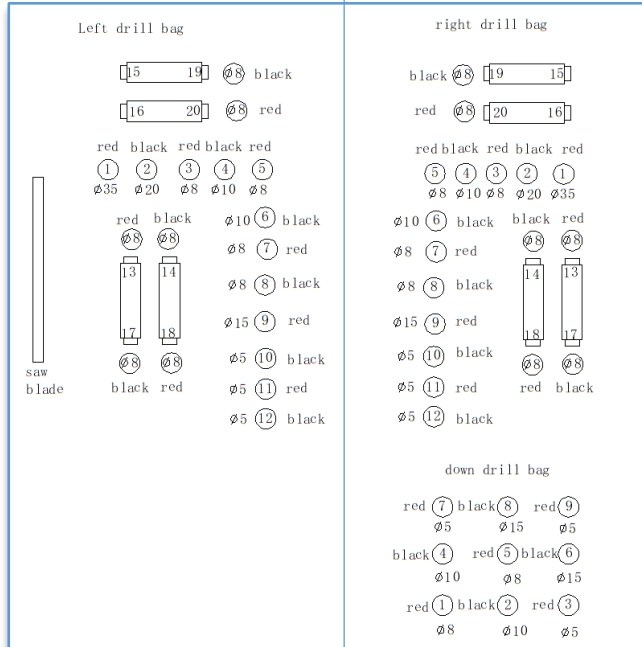
Accuracy Reliability Performance



The best piece support during horizontal drilling

The bottom support table lowers to allow the horizontal head to drill even at positions very close to the piece edge

Only Internal Use



Pressure Rollers

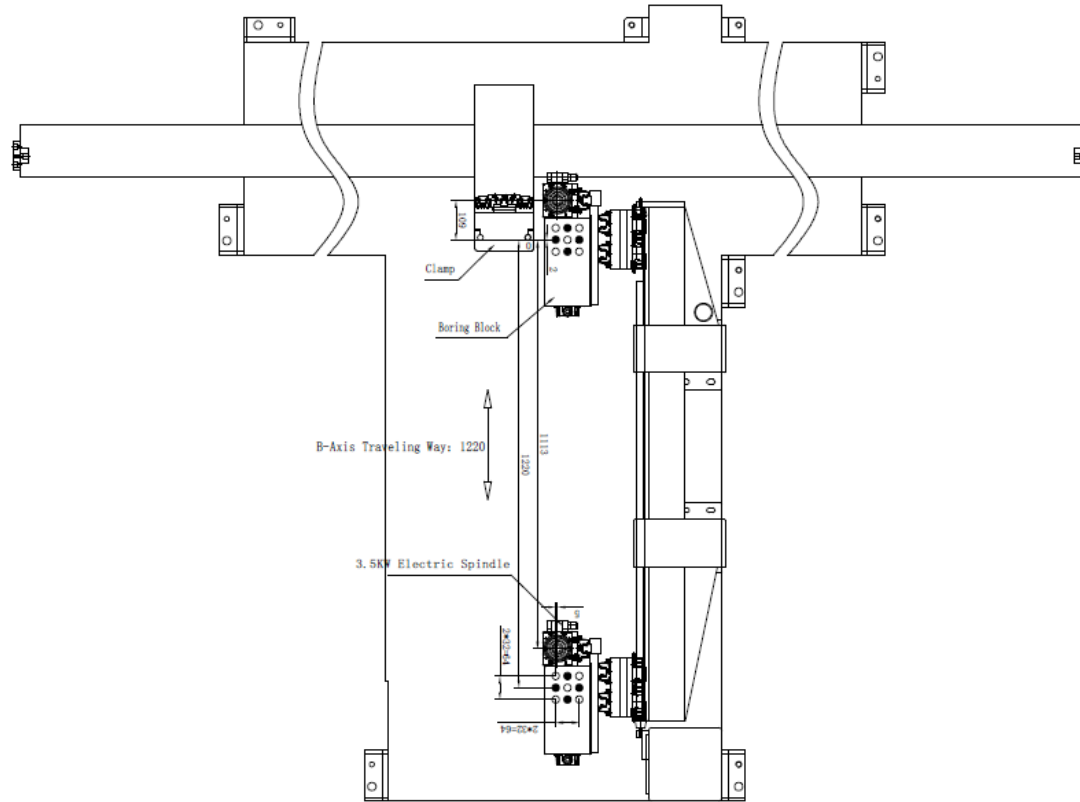
**Boring Head warmup time - 2 minutes
(every morning before production start)**

Bottom Drilling Head



Picture from the top of the bottom drilling head

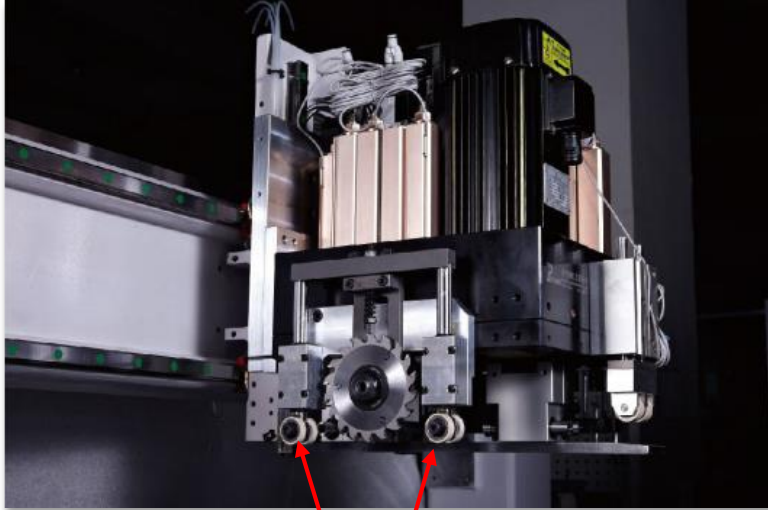
Bottom Drilling Head



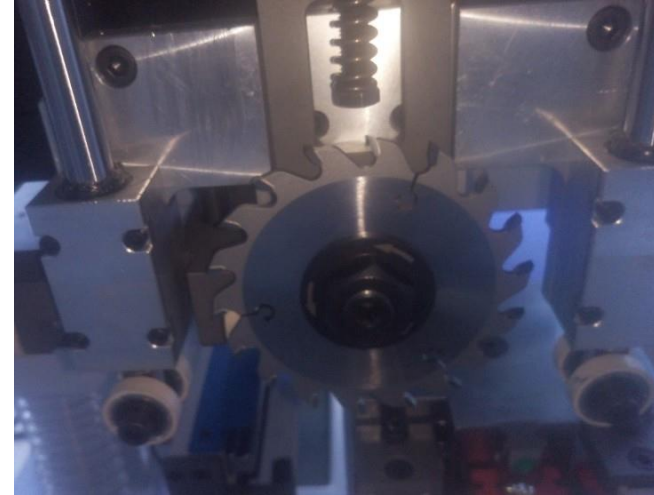
Working Area

Saw Blade Device

Mechanical transmission from Boring Head



Pressure Rollers

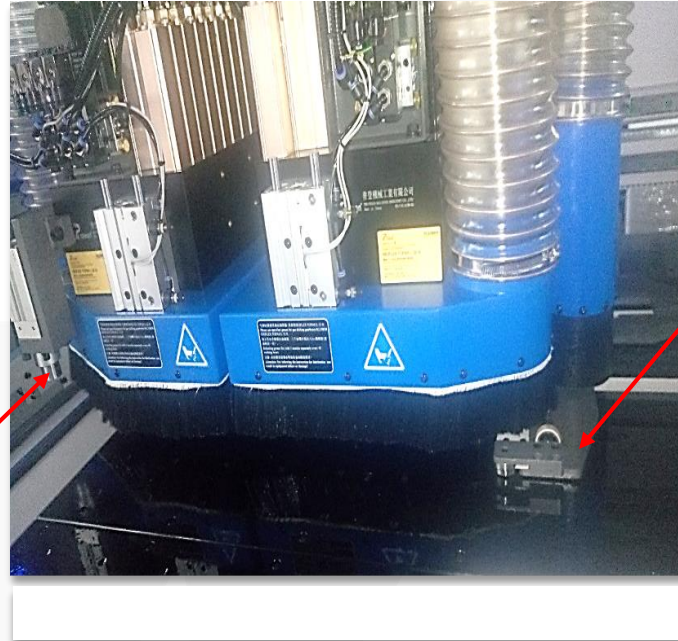


Max outer Diameter : 120 mm
Maximum Thickness of the blade: 10 mm
Hogging in the Y direction has to be greater than
50 mm but less than 800 mm

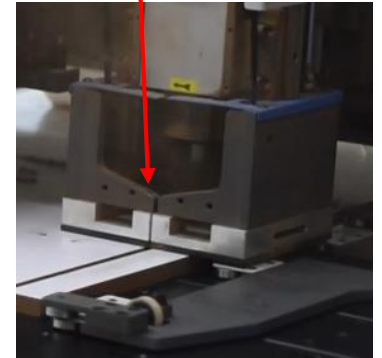
Electrospindels Units



**Mechanical reference (cylinder)
to allow the right pieces positioning**

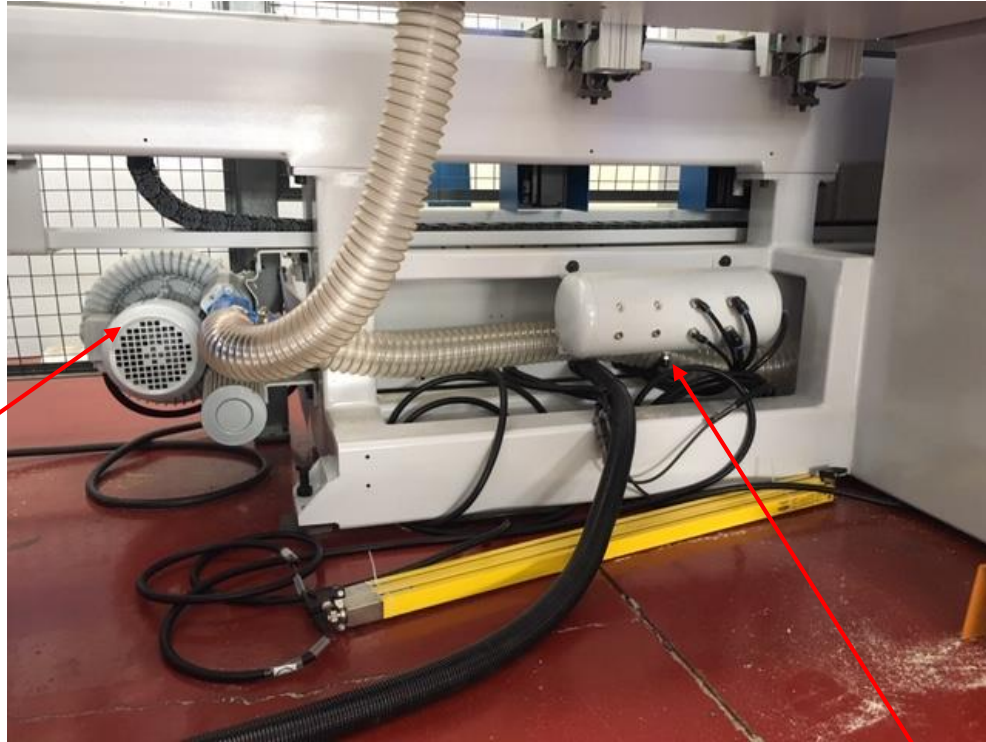


**Electrospindle presser
very effective for even
slightly wavy panels**

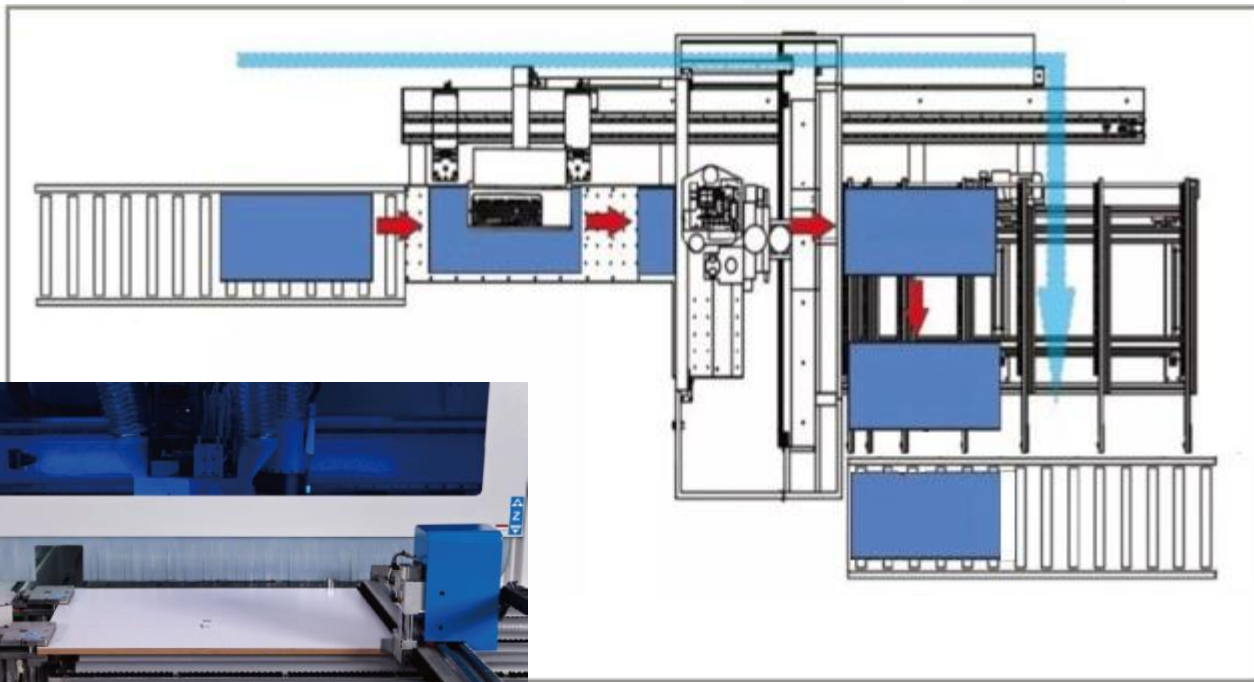


Accuracy Reliability

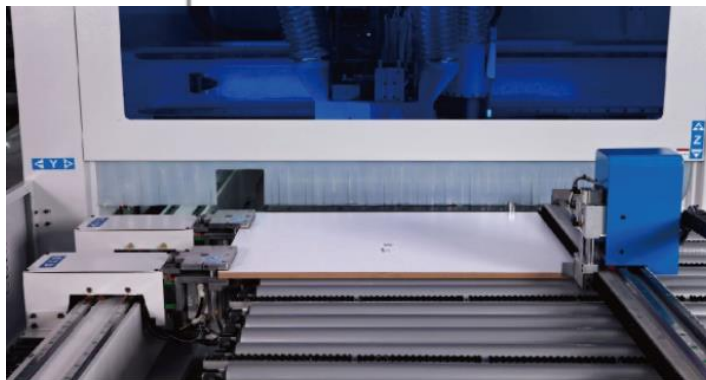
Air film for Table surface



Air tank for possible gaps of the Compressed Air circuit (external to the machine)



Bar Codes
Reader



Auto positioning

Not yet available

Only Internal Use