

PROSPECTUS EXTRUSION LINE 1991



**WE BRING
IT TOGETHER**
SINCE 1954



Extrusion



Recycling



Injection Moulding



R&D



Welding Techniques



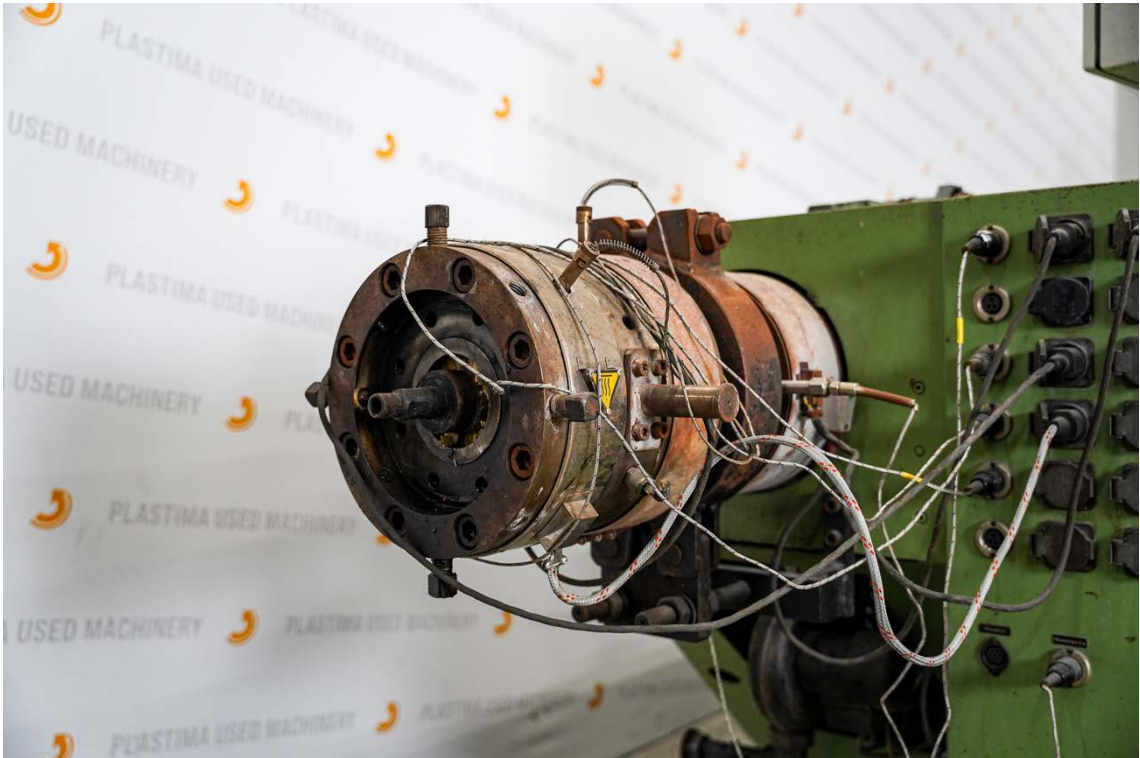
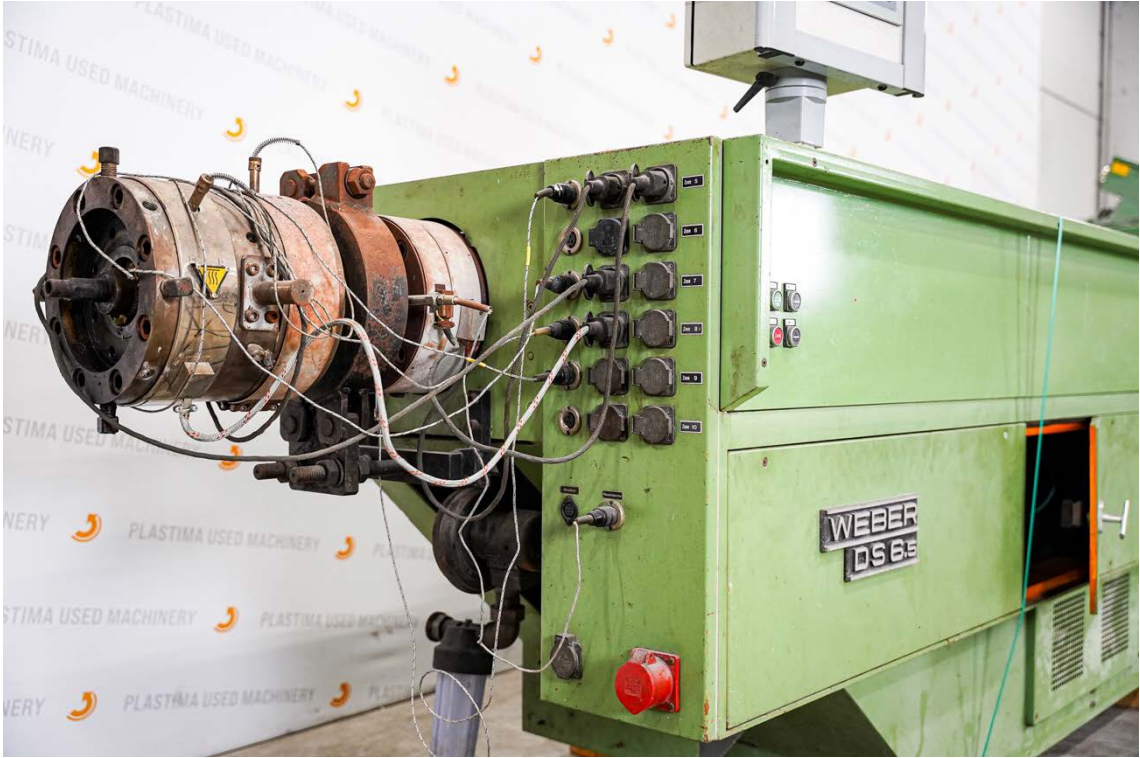
Other Processes

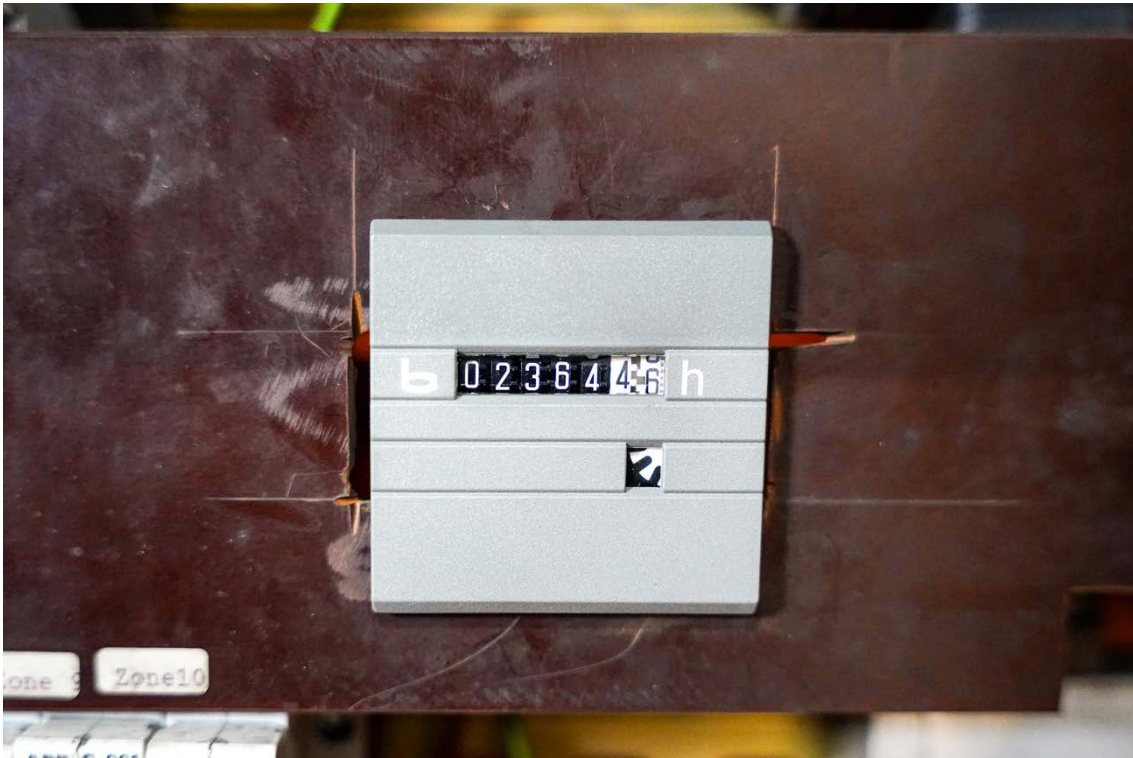
MACHINE INFORMATION

Brand	Hans Weber GmbH
Type	DS 6.5 – 17 D
Serial no.	DS 60 698
Single/Double	Double screw
Year of manufacturing	1991
Machine hours	2.364 h
Screw diameter	65 mm
L/D	17
Motor power	37 kW
Dimensions (LxWxH)	3000 x 1200 x 1240 mm
Weight	2200 kG









MACHINE INFORMATION

Brand ARTUR BASTON GmbH

Type ASP-410-G-2-175/1200

Year of manufacturing 1995

Power 10,5 kW

Voltage power 400 V

Frequenz 50 hz

Dimensions (LxWxH) 3600 x 1150 x 1650 mm

Weight 2000 kG









MACHINE INFORMATION

Brand	H. Weterings Plastic b.v.
Type	DUB Vacuum
Year of manufacturing	1985
Spray temperature max.	90 °C
Spray pump kW	2,2 kW
Dimensions (LxWxH)	3500 x 600 x 1200 mm
Weight	2000 kG



